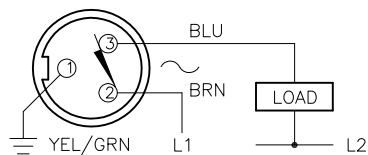


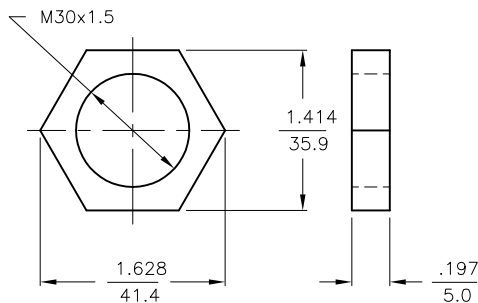
# WIRING DIAGRAMS



OUTPUT: RZ3X

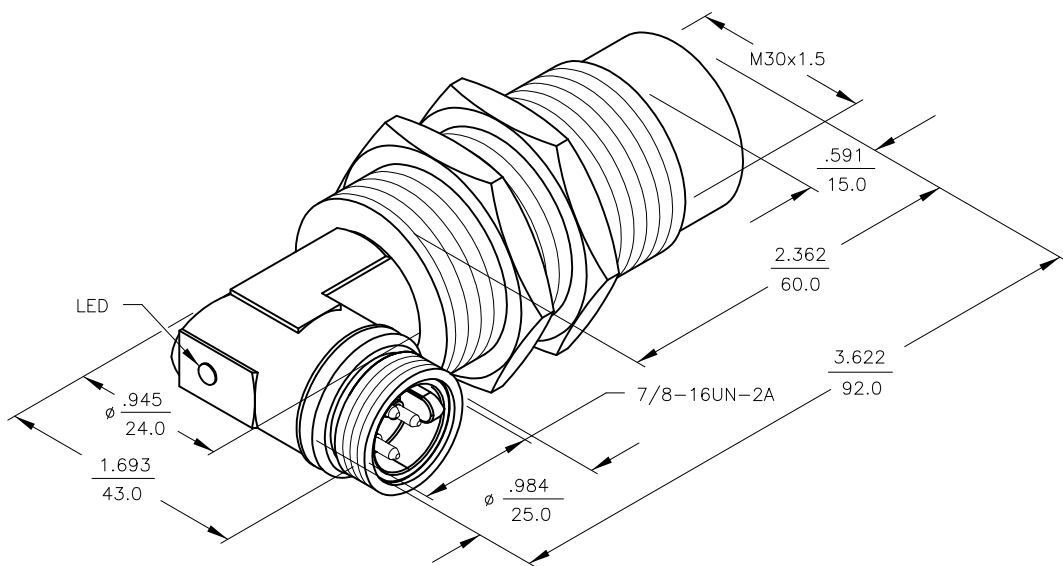
**WARNING: NO SHORT-CIRCUIT PROTECTION**  
ALWAYS WIRE A LOAD IN SERIES WITH THE SENSOR.

# LOCKNUT LN-M30



# SPECIFICATIONS

|                                       |   |
|---------------------------------------|---|
| OPERATING VOLTAGE                     | 20–250 V AC                                 |
| LINE FREQUENCY                        | 40–60 Hz                                    |
| HYSTERESIS (DIFFERENTIAL TRAVEL)      | 3–15% (5% TYPICAL)                          |
| VOLTAGE DROP ACROSS CONDUCTING SENSOR | ≤7.0 V at 500 mA                            |
| OUTPUT FUNCTION –RZ                   | NORMALLY CLOSED<br>2-WIRE AC SELF-CONTAINED |
| SHORT-CIRCUIT PROTECTED               | NO  |
| CONTINUOUS LOAD CURRENT               | ≤500 mA                                     |
| LEAKAGE (OFF-STATE) CURRENT           | ≤1.7 mA                                     |
| MINIMUM LOAD CURRENT                  | ≥5.0 mA                                     |
| INRUSH CURRENT                        | ≤8.0 (≤10 ms/5 Hz)                          |
| TIME DELAY BEFORE AVAILABILITY        | ≤25 ms                                      |
| POWER-ON EFFECT PROTECTION            | INCORPORATED                                |
| PROTECTION AGAINST TRANSIENTS         | 5 kV, 10 ms, 10 kΩ                          |
| OPERATING TEMPERATURE                 | –25°C to +70°C (–13°F to +158°F)            |
| ENCLOSURE                             | MEETS NEMA 1, 3, 4, 6, 13 AND IEC IP67      |
| SHOCK                                 | 30 g, 11 ms                                 |
| VIBRATION                             | 55 Hz, 1 mm AMPLITUDE<br>(IN ALL 3 PLANES)  |
| LED FUNCTION                          | RED: OUTPUT ENERGIZED                       |
| SENSING RANGE                         | 15 mm = .591" (NOMINAL)                     |
| SWITCHING FREQUENCY                   | 20 Hz                                       |
| REPEATABILITY                         | ≤2% RATED OPERATING DISTANCE                |
| SHIELDED                              | NO  |



|  |                                  |  |     |  |          |
|--|----------------------------------|--|-----|--|----------|
| <b>RELATED DOCUMENTS</b><br>1.<br>2.<br>3.<br>4. | <b>3RD ANGLE PROJECTION</b><br>  | THIS DRAWING IS CONFIDENTIAL AND THE PROPERTY OF TURCK INC. USE OF THIS DOCUMENT WITHOUT WRITTEN PERMISSION IS PROHIBITED. |     | 3000 CAMPUS DRIVE<br>MINNEAPOLIS, MN 55441<br>1-800-544-7769<br>(763) 553-7300<br>(763) 553-0708 fax<br>www.turck.us |          |
|  |                                  | DRFT   | GMB | DATE   | 11/23/88 |
|  |                                  | APVD   |     | SCALE  | NONE     |
|  |                                  | UNIT OF MEASUREMENT  |     | DESCRIPTION  |          |
| MATERIAL   | BRASS BARREL                     | INCH [ MILLIMETER ]  |     | N115-G30-RZ3X-B1431  |          |
| FINISH   | COPPER,NICKEL,<br>CHROME PLATING | DO NOT SCALE THIS DRAWING  |     | IDENTIFICATION NO.   | 4373700  |
| CONTACT TURCK FOR MORE INFORMATION               |                                  | FILE: 4373700  |     | REV  | E        |
| ECO. NO.   |                                  | SHEET 1 OF 1   |     |  |          |

|     |  |     |          |          |
|-----|--|-----|----------|----------|
| E   | UPDATE ID NUMBER PER HARMONIZATION PROJECT | CBM | 11/06/17 |          |
| REV | DESCRIPTION                                | BY  | DATE     | ECO. NO. |